

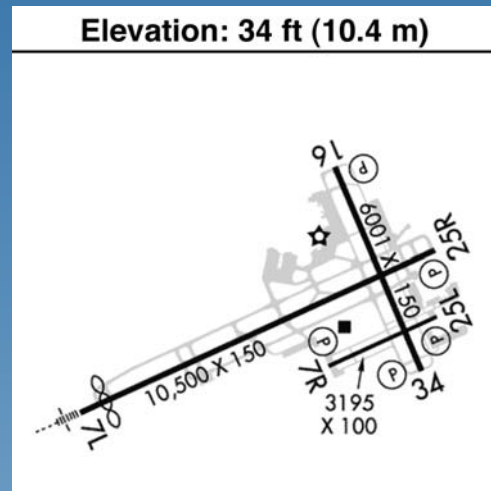
Five airports

to meet your
every business need...



Solusia County
F L O R I D A

Daytona Beach International Airport –KDAB
Daytona Beach



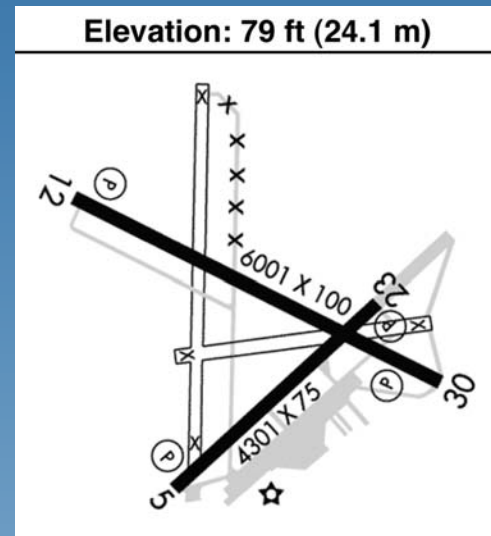
Daytona Beach International Airport offers daily non-stop flights to Atlanta and Charlotte with connecting flights to hundreds of other cities across the nation and around the world. Adjacent to Embry-Riddle Aeronautical University.

Available property: Corporate Park and other properties available on airport grounds. Aviation /avionics based businesses welcome.

web: flydaytonafirst.com



DeLand Municipal Airport – KDED
DeLand



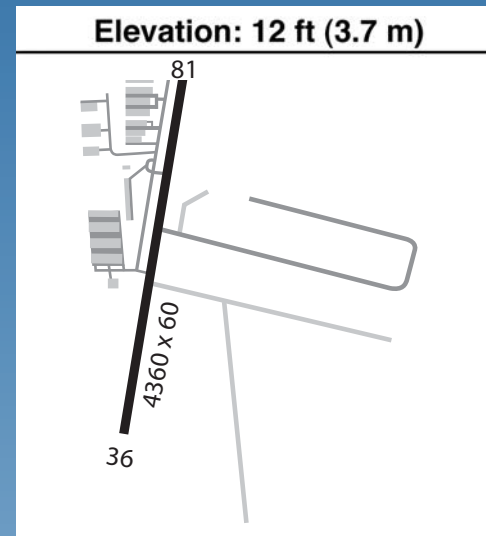
This airport serves as an uncontrolled general aviation reliever airport to commercial operations at Daytona Beach International Airport, Orlando Sanford International Airport and Orlando International Airport.

Available property: The DeLand Municipal Airport Business Park welcomes aviation, aerospace, medical manufacturing, and other vital industries. Airside and landside locations.

web: delandairport.com



Massey Ranch Airpark – X50
Edgewater



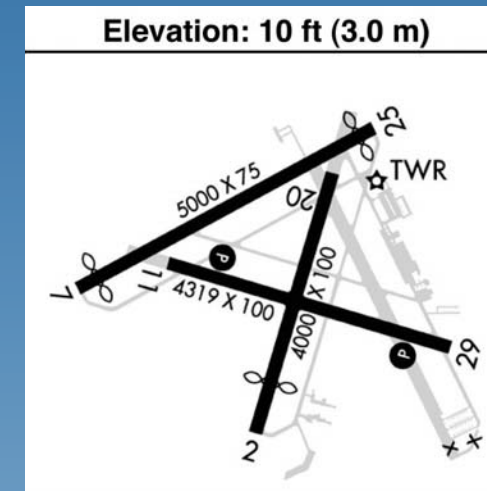
Coastal fly-in community and business park in southeast Volusia County. A general aviation airport ideally located outside of Class B, C and D airspace, one mile from the intercoastal waterway and three miles from the Atlantic Beaches.

Available property: residential, industrial and commercial with taxiway access for aviation businesses and support services. Live work and play in one beautiful area.

web: masseyranchairpark.com



New Smyrna Beach Municipal Airport – KEVB
New Smyrna Beach



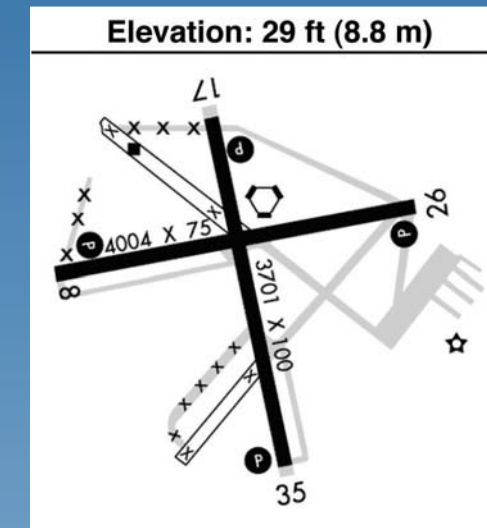
The ultimate destination, with close proximity to beaches, Kennedy Space Center and Central Florida attractions and events, the New Smyrna Beach Municipal Airport is the perfect alternative for the discerning business and pleasure traveler. 24-hour self service fuel farm.

Available property: aviation and non-aviation buildings, along with developable lots for sale or lease on the airport and within the adjacent industrial park. Zoned light industrial, with major roadways, on-site air charter services, nearby commercial airlines and full city services.

web: newsmyrnabeachairport.com



Ormond Beach Municipal Airport – KOMN
Ormond Beach



The Ormond Beach Municipal Airport is a busy general aviation facility located between I-95 and U.S. 1 with easy access to all of the Greater Daytona Beach Area and the I-4 corridor to Central Florida and beyond.

Airside properties are available for the development of aviation-related businesses and aviation support services. Property is also available in the adjacent Airport Business Park with planned access to the southwest quadrant of the airport.

web: ormondbeach.org/airport



You are cleared to land!

Airports of Volusia County

1. flydaytonafirst.com

Daytona Beach International Airport
700 Catalina Drive, Daytona Beach, FL 32114
Telephone: 386.248.8030

2. delandairport.com

DeLand Municipal Airport (Sidney H. Taylor Field)
1777 Langley Avenue, DeLand, FL 32724
Telephone: 386.740.6955

3. masseyranchairpark.com

Massey Ranch Airpark
635 Airpark Road, Edgewater, FL 32132
Telephone: 386.427.3100

4. newsmyrnabeachairport.com

New Smyrna Beach Municipal Airport (Jack Bolt Field)
602 Skyline Drive, New Smyrna Beach, FL 32168
Telephone: 386.424.2199

5. ormondbeach.org/airport

Ormond Beach Municipal Airport
Ormond Beach, FL 32175
Telephone: 386.676.3266

For information about Volusia County or for fiscal comparisons, business incentives, training, or other information your business may find of interest, please visit Volusia County Economic Development at floridabusiness.org, call us, or drop by our offices any work day.



Daytona Beach International Airport, 700 Catalina Drive, Suite 200
Daytona Beach, Florida 32114 • 800.554.3801 • 386.248.8048

