



Economic Development

Quarterly

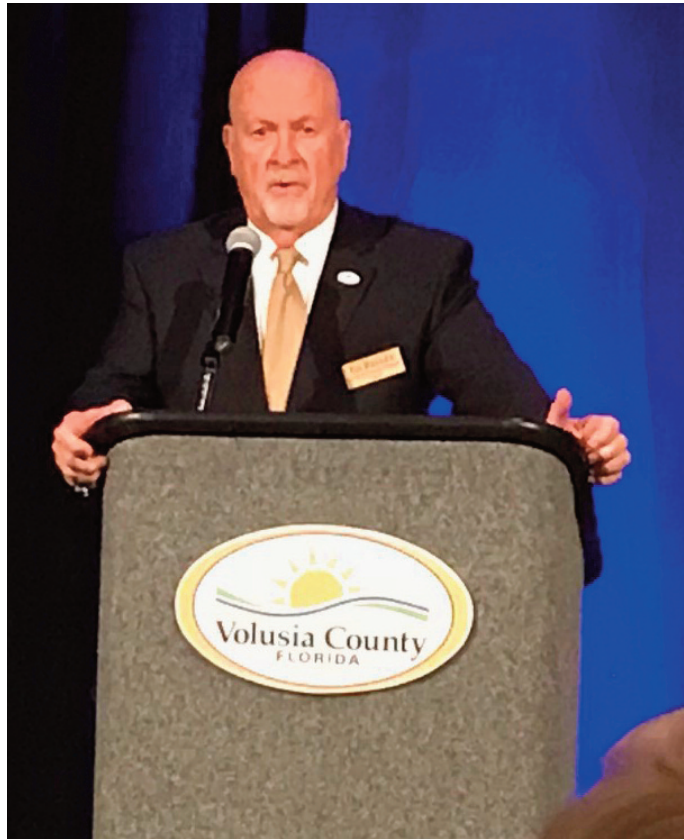
An official publication of the Volusia County Economic Development Division

First Quarter 2018

State of the County
Accelerating to new heights



State of the County
Accelerating to new heights



Volusia County Chair addresses a full house at the State of the County Address at the Ocean Center last month.

In 2017, the state of the county could be summarized as stable with plenty of optimism for the future. The future has arrived, and this year's State of the County presentation offered plenty to justify last year's optimism, so much so that the theme of the presentation was Accelerating to New Heights. Accordingly, the mood was decidedly upbeat at the annual event which was held at the Ocean Center.

Many of the milestones and highlights were recounted in comments by Volusia County Chair Ed Kelley and videos featuring the rest of the Volusia County Council, and a 24-page brochure, produced especially for the occasion. The event also outlined the goals for 2018.

Some of the highlights of the event included: collaboration with the cities and other community partners; reducing homelessness; improving public

safety through new union contracts for the Beach Safety officers and Volusia County Sheriff's deputies; economic development and job recruitment; improvements in transportation; beach and coastal enhancements; expanded Votran service; and completion in 2018 of many county government capital projects.

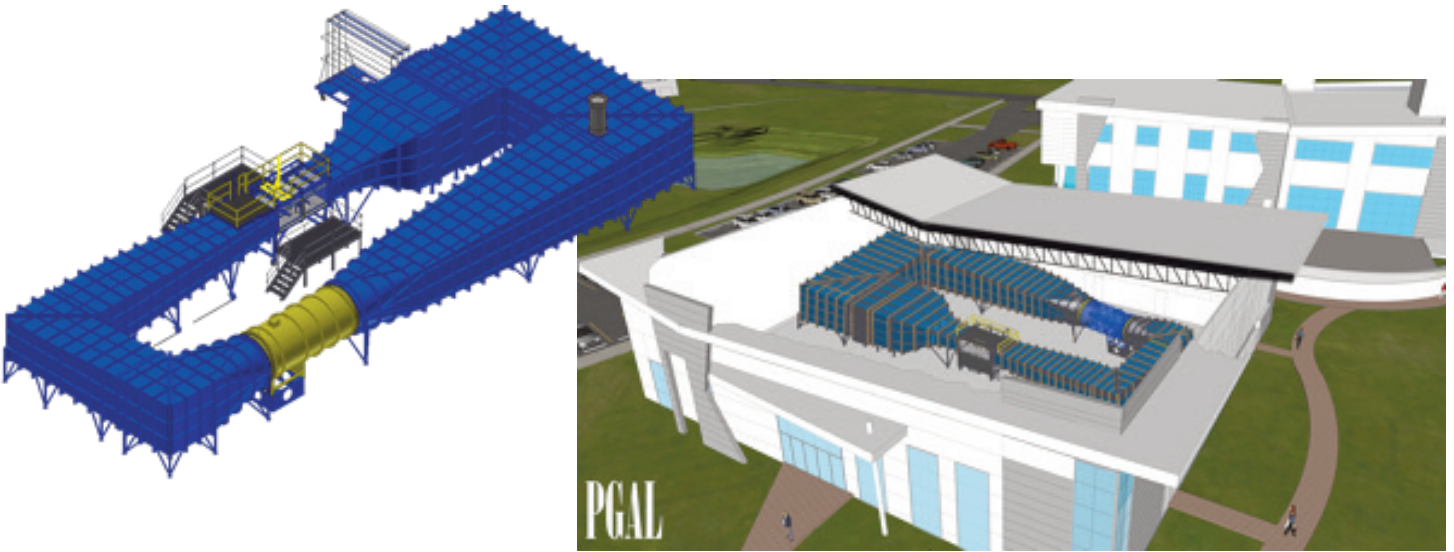
These and other milestones contributed to a very good year for our

community. Still, county leaders are set on accelerating to new heights in 2018, so that Volusia County becomes an even better place to live, learn, work and play.

The video and brochure can be viewed on the county's website, Volusia.org. Just click on the "State of the County" web banner or go to the County Council tab under "Government."

Embry-Riddle Aeronautical University

Wind tunnel, taxiway add dynamics to research park



Artist renderings of Embry Riddle's wind tunnel system and how it will be positioned in the building designed to house it.

Embry-Riddle Aeronautical University's Research Park is gearing up to play an active role in aviation and aerospace. Plans for its wind tunnel are well underway, as is the extension of Taxiway Sierra, which will link the complex to Daytona Beach International Airport.

Construction of the building housing the wind tunnel is nearing completion, clearing the way for installation of the large wind tunnel apparatus. The wind tunnel is an advanced subsonic system that will generate wind speeds of up to 230 miles per hour. It is an essential experimental tool in support of teaching and research in the field of aerodynamics. The system has advanced features that enhance precision flow measurement, including high-powered lasers and high-definition cameras to perform particle image velocimetry.

The university anticipates performing proprietary testing for aviation and aerospace entities in the future and is well-equipped to perform such research.

"This wind tunnel features exceptional flow quality and a state-of-the-art data acquisition system, which is critical for accurate testing," said Maj Mirmirani, interim senior vice president for academic and aviation research and dean of engineering at

Embry-Riddle. "Likely, this is the best wind tunnel in its class right now."

The wind tunnel is an important addition to the research park, which follows last year's completion of the MicaPlex, formally known as the John Mica Engineering and Aerospace Innovation Complex, another essential addition to the research park. MicaPlex serves as a driver of innovation, bringing student, faculty and business partners together as they research new technologies that will result in promising new systems and products for aviation and aerospace.

Another major development at the research park is the extension of Taxiway Sierra on the airfield of Daytona Beach International Airport. This makes Embry-Riddle one of only three universities with direct taxiway access to an airport, which provides enhanced convenience, safety and security in the movement of aircraft involved in the research and development process.

Also accessing Taxiway Sierra is a new hangar, currently under construction. When complete, the hangar will serve as headquarters for Eagle Flight Research Center, a university venture engaged in high-tech advances in UAV flight operations. Its work in the integration of electric and hybrid power sources in manned and unmanned aircraft is viewed by industry observers as a potentially vital advancement in reducing aircraft noise, which is a major factor in virtually all segments of aviation.

"These enhancements at Embry-Riddle's Research Park are very exciting," said Rick Karl, Volusia County's director of aviation and economic resources. "It is clear to see that the Research Park is commanding the interest of the aviation and aerospace industries. It builds on Embry-Riddle's formidable influence in those industries and will have great impact on Daytona Beach International Airport as a teaching airport and a resource for leisure and business travelers."

Boston Whaler groundbreaking celebrates expansion



Marking commencement of Boston Whaler's major expansion are (from left) Boston Whaler Project Manager Mark Essig, Boston Whaler President Nick Stickler, Volusia County Vice Chair Deb Denys, Edgewater Mayor Mike Ignasiak, Southeast Volusia Chamber of Commerce Executive Vice President Sue Williams, and Boston Whaler Vice President Rebecca Crews.

Boston Whaler is a global brand represented by legendary boats manufactured at the company's plant in Edgewater in southeast Volusia County. A \$42 million expansion of the company's plant got underway last month, with groundbreaking ceremonies attended by business, government and community leaders.

Company officials speaking at the event attributed Boston Whaler's success in the marketplace to the dedication of many individuals and organizations.

Boston Whaler President Nick Stickler expanded on that point saying, "Our dedicated and professional dealer partners are the face of Boston Whaler to literally thousands of new boaters every year. Our suppliers have helped us push the envelope in innovation and make countless successful new products. Our employees, through their hard work and dedication to the brand, are the backbone of our success. And this expansion demonstrates that business and government can work together to improve people's lives."

Boston Whaler manufactures about 3,000 boats a year. The expansion will increase the company's footprint to

more than 100 acres, allow for expanded production capabilities and generate new jobs. The company employs more than 800 workers, according to Jeff Vaughn, vice president of sales and marketing. He expects the expansion to add as many as 100 jobs.

Volusia County Council Vice Chair Deb Denys addressed the guests, recalling that she had participated in the ribbon cutting ceremony in 2015 for a 60,000-square-foot addition. She recognized Boston Whaler's contributions to the economic vitality of Volusia County and noted that the company has helped lower unemployment significantly. She noted that Boston Whaler previously hosted Florida Gov. Rick Scott, who visited twice in 2017 to shine a spotlight on the company's job creation success.

"Company officials worked with the City of Edgewater, Volusia County

Government and surrounding residential communities to develop the solution that we are celebrating here today," said Denys. "This collaboration, communication and coordination shown by Boston Whaler with local government throughout this process exemplifies the pro-business public policy that is alive and well in southeast Volusia County and throughout Volusia County."

After welcoming and introductory comments, guests took a bus tour of the manufacturing complex, with a stop at the company's boat launch on the Intracoastal Waterway. A groundbreaking ceremony was held, with a dramatic backdrop of a 30,000-pound front loader parked on an inverted Boston Whaler boat hull, demonstrating the product's incredible strength. No wonder Boston Whaler is known around the world as unsinkable.

Incubator companies wow visitors at open house



Connie Garzon Bernal, Associate Director / Volusia County Site Manager of the Volusia County Business Incubator powered by the University of Central Florida Business Incubation Program, sits in front of many of the incubator clients and staff members who welcomed the public to the incubator's open house.

The Volusia County Business Incubator powered by the University of Central Florida's Business Incubation Program opened its doors in December to individuals interested in learning more about the facility and its companies. The result was a strong show of support from the community and a fascination with the work of companies currently participating in the incubator program.

Visitors were given guided tours of the complex, with the opportunity of visiting with any of 20 early-stage innovative companies working at the incubator facility and five start-up companies from the John Mica Engineering and Aerospace Innovation Complex at Embry-Riddle Research Park, also known as MicaPlex.

"We had nearly 200 people attend the open house, including community leaders, business professionals, investors and more," said Connie Garzon Bernal, associate director and Volusia County site manager. "And thanks to sponsorship support from CareerSource Flagler Volusia, Cobb Cole law firm, SunTrust Bank, My School Tech Hub, Silva Fiduciary, MicaPlex, Pink Pineapple and Sazon Latino Restaurant, we were able to present the event free of charge."

The event included recognition of the incubator's Entrepreneur of the Year, Sanjay Krishnappa of Aerosapien Technologies, and Graduate Entrepreneur of the Year, Kimberly Yaney of Klein-Yaney Media based in Edgewater.

Participating incubator clients include these companies:

Aerosapien Technologies
Fit Meals
DHI Innovative Technologies
GRD Innovations
Rubicon Technical Services
VisSidus Technologies
HORMAC Civil Engineering Services
Florida Virtual Entrepreneur Center
Mobile Entertainment Venue
My School Tech Hub
Smart Sign Interactive
Silva Fiduciary Advisors
Space Training Adventure
Trotter Media

Corporate Chiropractic Health
County Health Care Guide.com
Medical Payment Recovery
Plan Life Care
LibLob
Salty Bum

Additionally, participating companies from the MicaPlex included:

Myers Devices
Weintraus
JackDrive Mobility
HyCarb
Censys Technologies

"It's amazing what is happening here," said Dr. Mary Bruno, former vice president of the College of Workforce, Continuing and Adult Education at Daytona State College. "Technology, innovation and entrepreneurial energy are evident here. What a great environment in which to nurture start-up companies."

The Sky's the Limit for DeLand Sport Aviation Showcase



SeaMax Aviation was among the exhibitors at the DeLand Aviation Showcase. Pictured are Shalom Confessor De Aguiar Do Amaral, Executive Director of SeaMax Aviation, and his wife, Bruna Gratz Do Amaral, the company's Senior Administrative and Operations Manager.

In only its second year, the DeLand Sport Aviation Showcase generated enough exhibitors, sponsors and spectators to thrill all kinds of aviation enthusiasts, but especially fans of the sport aviation community.

Sport aviation is a rapidly growing niche in aviation. Trade journals and manufacturers of sport aircraft agree on factors contributing to the increased popularity of this market segment. One is the lower cost of recreational aircraft as compared to conventional general aviation aircraft. Another is the lower training threshold to pilot a sport aviation aircraft. Above all, the fun factor contributes greatly to the appeal.

The event kicked off with a pancake breakfast hosted by Experimental Aircraft Association Chapter 635, followed by a white-diamond formation featuring 16 skydivers as a backdrop to the opening ceremonies.

Show Director Jana Filip welcomed participants and visitors and provided an overview of the three-day program. John Eiff, director of the DeLand Municipal Airport, extended the welcome remarks and announced a new development to be called Sport Aviation Village with Phase I projected

to be complete in mid-2018. It will welcome sport aviation manufacturers interested in expansion or relocation to DeLand .

Numerous sport aircraft were on display, and many aircraft participated in flight demonstrations. An exhibitors tent featured a wide variety of vendors offering numerous aviation products and services, many specifically geared to the sport aviation community. An exhibit stage was a perfect backdrop for announcements, press conferences and interviews, some of which were streamed live on various online outlets.

"As we moved around the showcase, exhibitors were demonstrating their aircraft. It was a very laid-back atmosphere," said Rickie Johnson, who was particularly pleased with his visit to the event. "Prospective buyers had the time to get information from different dealers without heavy pressure from sales representatives. Newcomers to the world of sport aviation could

ask questions and get answers from knowledgeable men and women in aviation. And since the economy is moving forward, the sale of new aircraft and the increase in new sport aviation pilots mean things are looking very good for the next couple of years."

The showcase program offered something for everyone.

Dan Johnson, president of the Light Aircraft Manufacturers Association, was a keynote speaker. He talked about the emergence of light sport aviation and its contributions to other aviation market segments.

WESH2 News meteorologist and pilot Eric Burris spoke about forecasting weather and the importance of understanding weather as an essential element of aviation safety.

Continued on next page

The Sky's the Limit for DeLand Sport Aviation Showcase

...continued from previous page



Aircraft Spruce – a major supplier of aviation systems, parts and accessories – sponsored daily hands-on workshops conducted by John Brecher of the Experimental Aircraft Association.

The state of the seaplane industry was covered in a keynote address by Steve McCaughey, executive director of the Seaplane Pilots Association.

Forums were offered by representatives of several familiar aviation organizations including Experimental Aircraft Association, Embry-Riddle Aeronautical University, Pipistrel Aircraft, Garmin, NORAD, Zenith Aircraft, Dynon Avionics, Bristell Aircraft and Lockwood Aviation.

Officials from the City of DeLand have supported the event from its

early planning stages two years ago. Team Volusia Economic Development Corporation, a charter sponsor for the inaugural event in 2016, returned as a sponsor of the 2017 event. In fact, Team Volusia worked closely with one of the exhibitors, SeaMax Aviation, to assist the company in establishing an assembly facility at Embry-Riddle Aeronautical University's MicaPlex. The company hopes to expand its Volusia County operation to add manufacturing in the future. SeaMax is the U.S. operation of a Brazilian aviation company.

"The DeLand Municipal Airport intends to become a center for sport aviation by developing the DeLand Sport Aviation Village, a year-round commerce park that will realize job

creation, and by hosting the annual DeLand Sport Aviation Showcase that will attract village occupants and boost tourism," said Sport Aviation Director Jana Filip. "The showcase and the village go hand in hand, and we are thrilled that the aviation community and City of DeLand have embraced these exciting initiatives."

Photos and video of the 2017 DeLand Sport Aviation Showcase are available on Facebook at <https://www.facebook.com/delandsportaviationvillage/>. Complete information can be found at www.sportaviationshowcase.com. Dates for the third annual Sport Aviation Showcase are Nov. 1 to 3, 2018.

Volusia County Trails Program gaining momentum



Trail enthusiasts and dignitaries gather to celebrate the ribbon cutting of the Dale Avenue SUN Trail in Edgewater. Pictured in the front row are (from left): former Volusia County Council Member and trails advocate Pat Northey, New Smyrna Beach Mayor Jim Hathaway, New Smyrna Beach Commissioner Jake Sachs, Edgewater Councilwoman Amy Vogt, Edgewater Councilman Dan Blazi, Edgewater Mayor Mike Ignasiak, Volusia County Vice Chair Deb Denys, Edgewater City Manager Tracey Barlow, Deltona Councilman Mitch Honnaker, New Smyrna Beach Commissioner Judy Reiker, and trails enthusiast Reagan Grace O'Keefe (front).

When it comes to quality of life and quality of the experience we offer our visitors, Volusia County's trail system is becoming more and more important. Residents – and visitors – appreciate a healthy trail system as a way to enjoy a community's scenic natural beauty and experience the health benefits of outdoor exercise. Since adopting its first Trails Plan in 1999, Volusia County has greatly expanded its trail system countywide, with an important new addition having recently been completed in southeast Volusia County.

"Trail enthusiasts recently celebrated the opening of the SUN (Shared Use Non-motorized) Trail with the trailhead at the south campus of Daytona State College in Edgewater, which marks completion of the first trail constructed with SUN Trail funds Florida," said Deb Denys, Volusia County Council vice chair and District 3 member. The trail is a 12-foot wide, paved multi-use path that extends the East Central Regional Rail Trail from Edgewater to New

Smyrna Beach and connects with the Coast-to-Coast statewide trail system.

The trail is a result of collaboration among the City of Edgewater, the River-to-Sea Transportation Planning Organization, Volusia County Government and the Florida Department of Transportation.

The source of funding underscores the statewide importance of trail systems, according to Tim Baylie,

director of Volusia County's Parks, Recreation and Culture Division.

"A few years back, Florida legislators passed a law that set aside approximately \$25 million on average from new vehicle registration fees for the development of trails within the state," Baylie said. The Florida Department of Transportation (FDOT) looked to the Office of Greenways and Trails to select a priority trail. When Volusia County

Continued on next page

Volusia County Trails Program gaining momentum

...continued from previous page

went to Tallahassee to compete against other jurisdictions in spirited competition, the St. Johns River-to-Sea Loop, a 260-mile loop through five counties, prevailed by a single vote. It was a great day and a great win for Volusia County."

All in all, Volusia County has 33 miles of paved asphalt trails, with another 22 miles of trails under construction or due to be completed this year.

Among the trails under construction is a 1.7-mile trail segment just northwest of DeLand along Grand Avenue from Lemon Street to King Street. Recently constructed trails include a trail from Blue Spring State Park south to near Detroit Terrace in DeBary, and from Cow Creek to Dale Avenue in Edgewater. Trails in design include a phased 5.9-mile trail gap through western DeBary and a 3.5-mile gap near Osteen-Maytown Road from Guise Road to Gobblers Lodge Road. FDOT also is studying a trail from Lake Beresford Park to Grand Road. A Volusia County Parks and Trails app offers up-to-date information.

Trail additions not only serve residents and visitors, they help attract family-style bicycling events. For example, next month Bike Florida will bring its Sand and Stars Tour to Volusia County.

"We look forward to sponsoring and hosting this event at what has become one of the largest bike riding routes in Florida," said Edgewater Mayor Mike Ignasiak. "There will be hundreds of bicycle riders coming in from all over the state, and they will love our trails for short rides, long rides and everything in between. This is extraordinary for our community. It puts Edgewater on a very important map. This lets the bicycling community know we have one of the most scenic trails to be found anywhere in Florida."

In addition to enjoyment of the outdoors, the presence of trails in communities has been linked directly to increased property values for homeowners and measurable health benefits including significant cost reductions in health care costs, particularly among diabetics and prediabetics.

The Sweetheart Trail in Daytona Beach is particularly important in light of development and potential development in downtown Daytona Beach. New Smyrna Beach is actively laying out the connector to the Edgewater segment, and the Florida Department of Transportation has identified a potential alignment from beachside Ormond Beach to mainland Ormond Beach that will connect to the trails in Holly Hill and Daytona Beach.

The trails movement is alive and well throughout Florida, according to Pat Northey, a former Volusia County Council member and long-time trail advocate and pioneer. "Today we enjoy the results of a decades-long commitment to create a vibrant trails system," she said. "But our growing trails system is not limited to Volusia County. Interconnecting trails soon will enable bicyclists to ride across the state to the west coast, or north to St. Augustine, and points in between. It's very exciting to watch, and it represents an extraordinary return-on-investment."

Area manufacturers salute the best of the best

The region's manufacturers gathered in December to celebrate milestones, accomplishments and innovation at the 37th Annual Awards Banquet of the Volusia Manufacturing Association (VMA), the area's manufacturing alliance. It was an opportunity to shine a spotlight on nine firms and individuals whose accomplishments are advancing and elevating the profile of manufacturing in the area and helping attract more manufacturers and skilled workers.

"The energy in this room is amazing," said Jayne Fifer, president and CEO of the VMA manufacturing alliance. "There is remarkable work being done in manufacturing throughout our region, and tonight's event shines a bright light on that work while recognizing the best of the best."

Frank Mercer, director of the Center for Business & Industry at Daytona State College, agreed. In his comments as emcee for the evening, he said: "The community is an incredible location for manufacturing. From food products to surgical supplies, from aerospace components to personal care products, we make it here," parroting the often-cited VMA motto, "We make it here!"

In addition to a fast-paced video and video testimonials from several companies, awards were presented in key categories important to VMA and the entire manufacturing industry. Winners were selected under the direction of Tom Hayden and Perry Sperber, who led the Board of Examiners and have long resumes of achievement in manufacturing. Winners included:

We Make It Here!
Education Champion Award
Jim Maynard, Pine Ridge High School
Advanced Manufacturing Academy

Best Practice

Sparton Corporation for its employee-driven, autonomous food pantry program

Best Practice

Teledyne Marine for cost efficiencies and design achievements

We Make It Here! Amazing Product

Fabco Metal Products LLC for its structural steel wall series featured in major commercial developments, such as the volcano at Universal Studios' Volcano Bay water theme park in Orlando

Friend of Industry Award

Homewood Suites for initiatives in advancing the interests of manufacturing and VMA

Karl Schiller Member of the Year

Ken Brace of Rapid Prototyping Services for advancement of manufacturing in our area

Exporter of the Year

Guernsey Architectural Solutions for elevating the global profile of products made here

Entrepreneur of the Year

Stephen Dougherty of Dougherty Manufacturing for creating and growing his enterprise



Bill Crooms of Thompson Pump was honored by VMA with its Hall of Fame "Manny" Award for service to his company, his profession and his community.

A highlight of an evening filled with highlights included presentation of the Hall of Fame "Manny" Award to Bill Crooms of Thompson Pump for service to his company, profession and community.

In a tribute to Crooms, Bill Thompson, CEO of Thompson Pump, said: "In my 40-plus years of working with Bill, I have observed firsthand how much people from all walks of life like him. More importantly, they respect him. They respect his leadership, his knowledge, his patience, his perseverance, his sense of humor and his willingness to do whatever it takes to get the job done. When Bill Crooms travels to other countries in support of Thompson Pump products, he represents himself, our company and Volusia County in a professional and exemplary manner."

The Volusia Manufacturers Association serves Flagler, Volusia, and surrounding counties. It is the region's leading resource for manufacturers, connecting them to each other and the community. Founded in 1980 by manufacturers for manufacturers, VMA provides information, education and networking opportunities to help its members grow and succeed. For additional information, visit www.vmaonline.com.

Serving automotive performance enthusiasts from DeLand Crossings

The High Performance of BBK Performance

*By BRIAN MURPHY
President & CEO
BBK Performance, Inc.*

Detroit's Big Three automobile manufacturers – Ford, Chevrolet and Chrysler – have made a huge commitment to computer controlled performance vehicles. In 1988, I formed BBK Performance Inc. to be a performance products supplier to owners of what was then Detroit's new generation platform of computer controlled performance vehicles, particularly the highly popular Ford Mustang.



BBK was off to a fast start. With just a year under our belt, my brother Ken joined the company, leading our engineering team's launch of a new line of performance throttle bodies, air intakes and performance exhaust products. We have become known as an industry leader in the design and manufacture of bolt-on performance auto and truck products in this \$40 billion per year industry.

Our plant in Temecula, California, offers 100,000 square feet of design and manufacturing space. Due to 21st century growth, we began a search of the east coast of the United States to add warehouse capacity and possible production space. With 75 percent of our distributors located east of the Mississippi River, an eastern presence was becoming a necessity.

After narrowing our choice to Florida and a few other states, Volusia County emerged as the best location due to its business-friendly environment and access to skilled labor. As the home of Daytona International Speedway and its related performance racing events, Volusia County offered special appeal to our company as a performance-based manufacturer.

We opened our 64,000-square-foot location in 2009 at Volusia County's DeLand Crossings Industrial Park with a six-person staff. It houses BBK's state-of-the-art distribution facility, the company's sales and marketing teams, and a retail showroom.

Volusia County's employee base has been good, and operating from DeLand Crossings has been very profitable. From 2009 to 2015, we have enjoyed growth here, despite the economic downturn. Expanding our product line to support more automotive models helped the company prosper and contributed to expansion of the Florida team. We have more than 15 staff members with new positions added each month. We continue to expand the BBK product line with a strong emphasis on receiving coveted 50-state EPA legal status on many of them.

BBK Performance continues to invest in Volusia County with the announcement of our second facility at DeLand Crossings Industrial Park on the adjacent parcel purchased in 2016. We are in pre-development for the design and permitting for a new 60,000-square-foot facility that will

bring 40 to 50 additional jobs to Volusia County. Completion is anticipated in the second quarter of 2019. The new facility will feature a state-of-the-art exhaust manufacturing department with approximately 30 staff members as well as a full CNC machine division with 20 to 25 team members. Full-time positions will be available for welders, machinists, machine programmers and additional production personnel.

Volusia County is a great place to live, learn, work and play, and the current pro-business climate in the United States has given us confidence to move ahead with the new expansion. Our project goal is to transfer all our California production to Volusia County, allowing us to further broaden our performance product line. We intend to continue our expansion into other markets and automotive models, and plan to support that increase in sales from our expanded facilities at DeLand Crossings Industrial Park.

Economic development 101

The Importance of Pre-Development Assessments in Industrial Site Selection

by *PEDRO LEON*

Business Manager / Business Assistance

Volusia County Economic Development Division

In business, success comes by never losing sight of the basics. In economic development, one of those basics is the importance of pre-evaluating industrial development locations and having the best candidate sites ready-to-go for companies seeking new locations. The facility search process is competitive. High-resolution aerial photography, demographic databases, digital maps and computer selection models allow communities across the country to be screened for site location winners and losers.



Pedro Leon

One of the more significant site evaluation tools is the use of Geographic Information System, or GIS, maps. GIS maps can be used to identify and display prominent characteristics of multiple industrial parcels. The current Economic Development Industrial Land Study (EDILS) project is a collaboration of Volusia County and local cities; it uses these GIS maps to evaluate parcels for potential development as industrial sites. The resultant maps highlight the best locations based on typically needed characteristics such as proper zoning, lot size, roadway and utility access, and ease of governmental permitting. Currently, the EDILS project has identified more than 35 industrially zoned locations, with a minimum threshold size of 25 acres, comprising approximately 3,000 acres in Volusia County that may have development potential.

Such tools are critical because manufacturing and distribution companies are expanding throughout the

country. This is especially true for e-commerce companies needing large distribution facilities, often in the range of a million square feet or more, because they are in a race to accomplish rapid last mile deliveries within heavily populated consumer areas. Volusia County's proximity and ease of access to I-4 and I-95 offer a logistical site selection advantage.

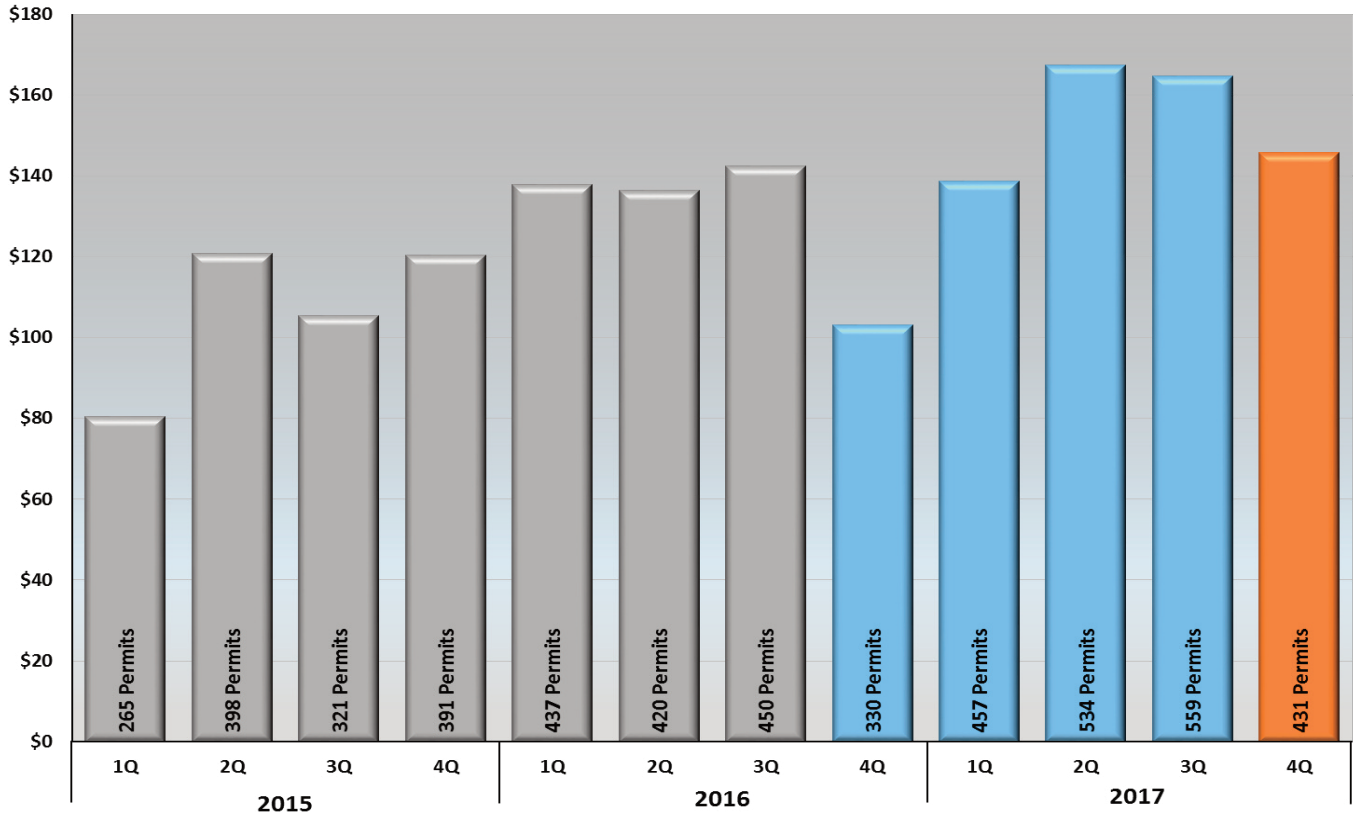
One company taking advantage of that logistical advantage is the performance automotive parts manufacturer/distributor, BBK Performance Inc. In 2009, this California-based company invested several million dollars in constructing its existing 64,000-square-foot distribution facility at the DeLand Crossings Industrial Park, located at Interstate 4 and State Road 44. Elsewhere in this publication, you will read the BBK Performance president's announcement of its upcoming 2018 expansion of an additional 60,000 square feet.

The Volusia County Council's decision in 2005 to support the development of DeLand Crossings Industrial Park has shown the value of advocating for competitively located industrial sites and preparing for future project opportunities. With three companies now comprising more than 180,000 square feet of industrial facilities, DeLand Crossings Industrial Park is generating property tax revenue of more than \$200,000 to the community every year.

The Division of Economic Development remains committed to collaboration with our public and private sector partners in support of business expansion initiatives including the ongoing effort to identify areas for future development. To learn more about the EDILS project, contact us at 386-248-8048 or visit www.floridabusiness.org.

Volusia County Residential "New Construction" Building Permit Data

Permit Value (millions)

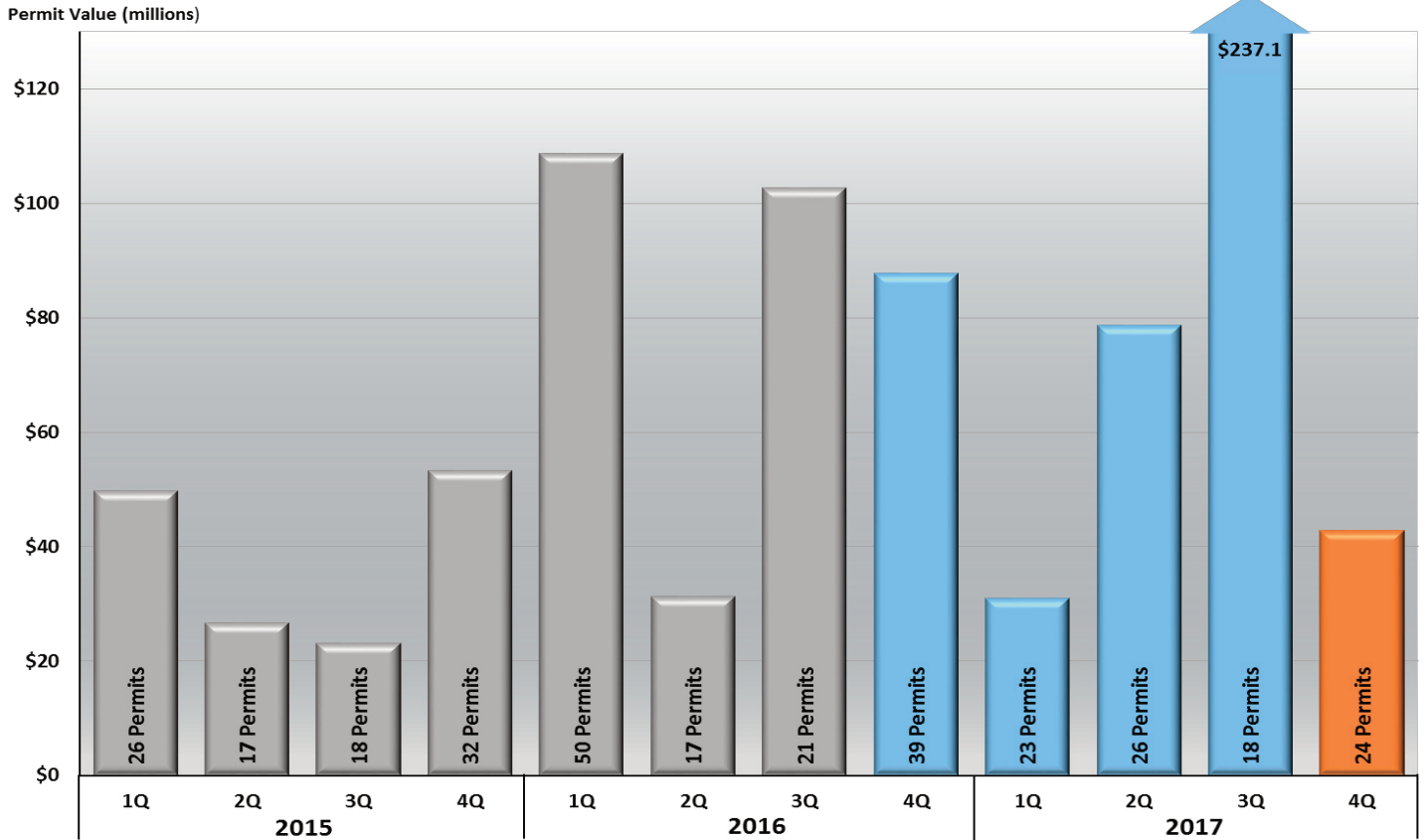


Volusia County Residential "New Construction" Building Permit Data

	4th Qtr 2016		1st Qtr 2017		2nd Qtr 2017		3rd Qtr 2017		4th Qtr 2017	
	Permits	\$ Value	Permits	\$ Value	Permits	\$ Value	Permits	\$ Value	Permits	\$ Value
Daytona Beach	11	\$3,628,408	8	\$2,568,673	8	\$2,456,426	45	\$11,207,804	15	\$4,614,312
Daytona Beach Shores	0	\$0	0	\$0	1	\$1,483,000	0	\$0	0	\$0
DeBary	9	\$3,916,612	21	\$7,854,747	34	\$13,501,722	15	\$6,110,683	28	\$10,674,180
DeLand	70	\$23,081,726	88	\$29,637,887	78	\$24,407,180	137	\$40,885,326	110	\$37,989,235
Deltona	26	\$7,396,822	47	\$12,504,121	42	\$11,846,520	49	\$12,352,044	17	\$4,267,561
Edgewater	8	\$1,206,333	11	\$1,694,135	18	\$3,359,825	15	\$2,179,940	10	\$4,251,672
Holly Hill	0	\$0	0	\$0	2	\$371,000	0	\$0	0	\$0
Lake Helen	0	\$0	1	\$291,508	1	\$370,000	2	\$730,306	1	\$198,000
New Smyrna Beach	66	\$22,391,906	76	\$26,328,749	100	\$38,120,938	81	\$26,842,172	100	\$35,430,218
Oak Hill	0	\$0	2	\$333,950	3	\$385,990	6	\$1,108,070	9	\$1,819,828
Orange City	2	\$576,000	17	\$5,046,000	5	\$1,456,000	1	\$259,000	6	\$1,704,418
Ormond Beach	31	\$9,075,164	47	\$15,484,238	47	\$15,890,978	42	\$12,207,434	22	\$7,376,496
Pierson	0	\$0	0	\$0	0	\$0	0	\$0	0	\$0
Ponce Inlet	0	\$0	1	\$298,000	3	\$1,355,259	4	\$3,539,000	1	\$388,125
Port Orange	34	\$10,922,226	64	\$15,309,945	60	\$18,547,392	51	\$16,724,794	43	\$13,741,590
South Daytona	0	\$0	0	\$0	0	\$0	1	\$342,572	0	\$0
Unincorporated	73	\$20,929,147	74	\$21,383,927	132	\$33,804,581	110	\$30,161,733	69	\$23,413,712
Totals for Quarter	330	\$103,124,344	457	\$138,735,880	534	\$167,356,811	559	\$164,650,878	431	\$145,869,347

Source: City and County permit offices reporting new construction activity.

Volusia County Commercial "New Construction" Building Permit Data



Note: 3Q 2017 includes \$202.9 million for Daytona Beach Convention Hotel at 500 N. Atlantic Ave.

Volusia County Commercial "New Construction" Building Permit Data

	4th Qtr 2016		1st Qtr 2017		2nd Qtr 2017		3rd Qtr 2017		4th Qtr 2017	
	Permits	\$ Value	Permits	\$ Value	Permits	\$ Value	Permits	\$ Value	Permits	\$ Value
Daytona Beach	11	\$15,931,369	8	\$3,757,023	11	\$47,777,355	5	\$218,479,495	4	\$9,532,687
Daytona Beach Shores	0	\$0	0	\$0	2	\$13,486,344	1	\$319,716	0	\$0
DeBary	3	\$1,331,847	0	\$0	1	\$200,000	1	\$412,000	0	\$0
DeLand	3	\$23,794,489	5	\$8,986,634	2	\$3,217,079	1	\$65,000	0	\$0
Deltona	0	\$0	1	\$12,633,572	0	\$0	1	\$2,070,000	2	\$3,854,306
Edgewater	0	\$0	0	\$0	0	\$0	1	\$850,000	2	\$1,496,500
Holly Hill	1	\$8,000	1	\$17,500	1	\$30,000	2	\$420,000	1	\$6,900
Lake Helen	0	\$0	0	\$0	0	\$0	0	\$0	0	\$0
New Smyrna Beach	3	\$11,295,942	0	\$0	1	\$1,084,844	2	\$585,005	7	\$12,471,364
Oak Hill	0	\$0	0	\$0	0	\$0	0	\$0	0	\$0
Orange City	1	\$678,000	2	\$2,614,000	1	\$2,855,000	2	\$9,911,000	1	\$1,750,000
Ormond Beach	1	\$1,517,106	1	\$630,000	2	\$2,487,947	0	\$0	3	\$5,376,195
Pierson	0	\$0	0	\$0	0	\$0	0	\$0	0	\$0
Ponce Inlet	0	\$0	0	\$0	0	\$0	0	\$0	0	\$0
Port Orange	16	\$33,235,118	4	\$2,267,165	0	\$0	1	\$1,550,000	1	\$993,741
South Daytona	0	\$0	0	\$0	0	\$0	0	\$0	0	\$0
Unincorporated	0	\$0	1	\$10,000	5	\$7,624,234	1	\$2,442,000	3	\$7,386,055
Totals for Quarter	39	\$87,791,871	23	\$30,915,894	26	\$78,762,803	18	\$237,104,216	24	\$42,867,748

Source: City and County permit offices reporting new construction activity.

On the Economic Scene goes digital



On the Economic Scene, the popular weekly rapid-read newsletter of the Volusia County Economic Development Division, is now distributed exclusively by email. The publication had been a fax-distribution newsletter since it began publishing in 2002. In addition to email, the e-publication also is posted at <http://www.floridabusiness.org/economic-reports/scene.shtml>.

If you wish to be added to **On the Economic Scene** distribution list, send your email address to doed@volusia.org with your request.

Volusia County Economic Development Quarterly is a publication of Volusia County Government and is produced by the Volusia County Economic Development Division. It is produced for readers who have an interest in the area's business, economic development and real estate market. As an economic development tool, it is intended to provide information and statistics that have meaning to your business. To submit story ideas or offer comments, please contact Community Information Director Joanne Magley at 386 822 5062 or by email at jmagley@volusia.org. If you want to add a name to the distribution list, email ssprague@volusia.org. For more information about economic development in Volusia County visit floridabusiness.org.

